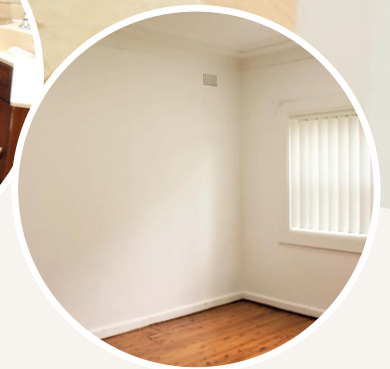




Glow Healthcare

# SUPPORTED INDEPENDENT LIVING (SIL)

PROPERTY ID: 2145



Settle into this fully accessible home with a spacious backyard, that is close to public transport.



Bedrooms:  
3 spacious  
rooms



Bathrooms:  
2 toilets & 1  
bathroom



Accessibility:  
Improved  
Liveability



Support:  
Daily with  
active night  
model



Car Spaces:  
3 car spaces &  
a deck



Security:  
Fully secured &  
fenced

**Call our SIL Team  
at 02 86601936 Ext.22  
Look for Rafael Alejandro**

**YOUR NEW HOME**

# Supported Independent Living (SIL) - Mays Hill NSW 2145

---

Settle into this fully accessible home with a spacious backyard, that is close to public transport.

## House Features

- Double Brick House, One Storey/ Low set
- Wheelchair accessible
- Open plan kitchen, meals and living areas provide ample space for quiet time and socialising.
- With spacious laundry area
- Spacious backyard with undercover sitting area.
- The bathroom is wheelchair accessible with shower, bath tub, accessible vanity and toilet.
- Air conditioning, Broadband
- Fully Secured and fenced, spacious backyard garden, outdoor entertainment
- With 3 car spaces

## Bedroom features

- Built-in robes
- Wood floors
- Wide windows

## Local Area

- The house is close to public transport
- The house is also near parks, gardens, cafes, restaurants
- Medical Centre - 1 minute walk
- Westmead Hospital - 10 minutes
- Parramatta CBD - 5 minutes

## Interested in applying?

- The applicant is aged 18 years or over.
- The applicant has approved SDA, SIL, STA, MTA or LTA eligibility and
- NDIA funding at the appropriate level.
- The applicant has the financial means to pay rent and utilities and is prepared to sign (or a representative to sign) a residential agreement.
- Supported Independent Living (SIL) accessibility type for this house is Improved liveability.

## Find out how this can be your new home

To apply or to arrange an inspection, contact GHA on:

[info@glowhealthcareagency.com.au](mailto:info@glowhealthcareagency.com.au)  
[www.glowhealthcareagency.com.au](http://www.glowhealthcareagency.com.au)

For SIL enquiries or for more details contact GHA on:

**02 86601936 Extension 22**  
Look for **Rafael Alejandro Zelada Gomez**  
[rafael@glowhealthcareagency.com.au](mailto:rafael@glowhealthcareagency.com.au)